

PROJECT
**BALLIEMEANOCH
 PUMPED STORAGE
 HYDRO**

CLIENT
 ILI (Borders PSH) Ltd.

CONSULTANT
 AECOM Limited
 177 Bothwell Street
 Glasgow G2 7ER
 www.aecom.com

- LEGEND**
- Development Boundary
 - Permanent Infrastructure
 - Core Paths
 - Recreational Routes
 - Caledonia Way (NCN78)
 - Local Walking Paths
 - Public Right of Way (Heritage Paths)

NOTES

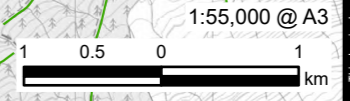
Reproduced from Ordnance Survey digital map data © Crown copyright 2023. All rights reserved. Licence number 0100031673. Contains public sector information licensed under the Open Government Licence v3.0.

ISSUE PURPOSE
 FINAL

PROJECT NUMBER
 60570241

FIGURE TITLE
 Outline Access Management Plan

FIGURE NUMBER
 Figure 16.2



This drawing has been prepared for the use of AECOM's client. It may not be used, modified, reproduced or relied upon by third parties, except as agreed by AECOM or as required by law. AECOM accepts no responsibility, and denies any liability whatsoever, to any party that uses or relies on this drawing without AECOM's express written consent. Do not scale this document. All measurements must be obtained from the stated dimensions.